

A PLAT OF - TOWER GOLF COURSE

BEING PLAT NO. 17 OF MARTIN DOWNS, A P.U.D.
LYING IN SECTIONS 11, 13 & 14 TWP. 38S., RGE. 40E.
MARTIN COUNTY, FLORIDA

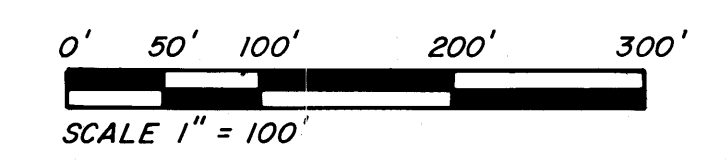
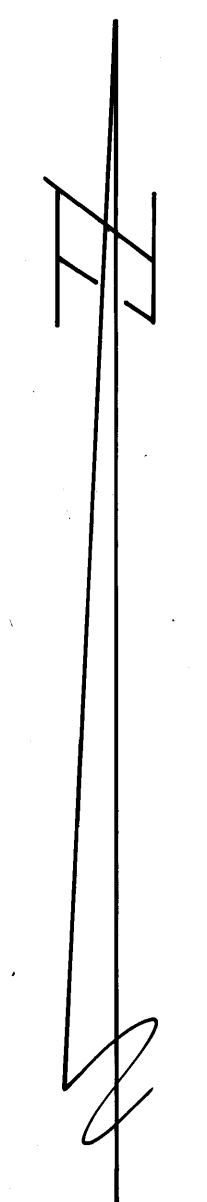
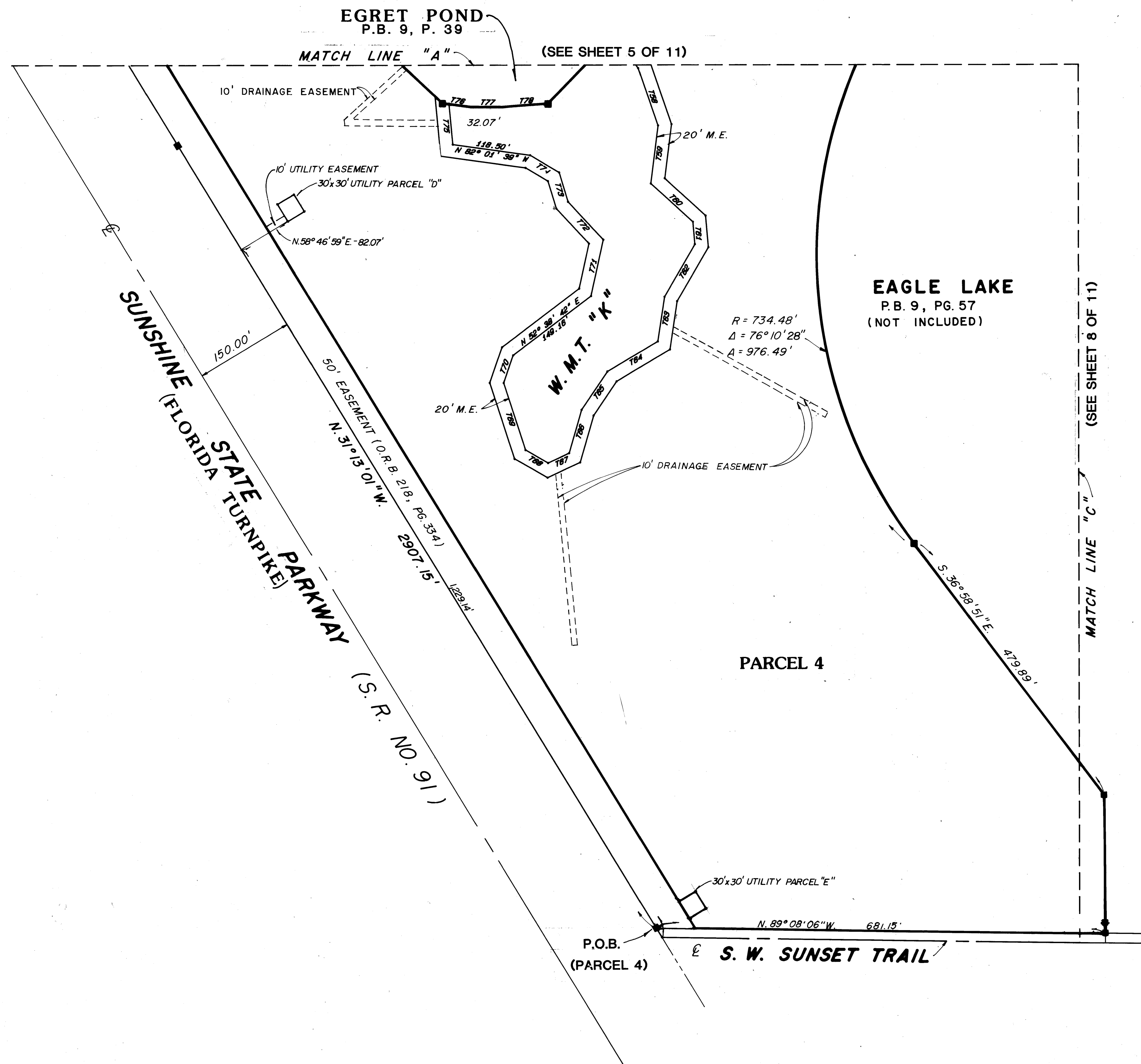
FEBRUARY, 1986

I, LOUISE V. ISAACS,
CLERK OF THE CIRCUIT
COURT OF MARTIN COUNTY,
FLORIDA, HEREBY CERTIFY
THAT THIS PLAT WAS FILED
FOR RECORD IN PLAT
BOOK 10, PAGE 23,
MARTIN COUNTY, FLORIDA,
PUBLIC RECORDS, THIS
DAY OF _____
A.D., 1986.

LOUISE V. ISAACS, CLERK
CIRCUIT COURT
MARTIN COUNTY, FLORIDA.

BY _____
DEPUTY CLERK

FILE NO. _____



- = SET P.R.M.
- = FND. P.R.M. (PERMANENT REFERENCE MONUMENT)
- W.M.T. = WATER MANAGEMENT TRACT
- M.E. = MAINTENANCE EASEMENT
- M.A.E. = MAINTENANCE ACCESS EASEMENT